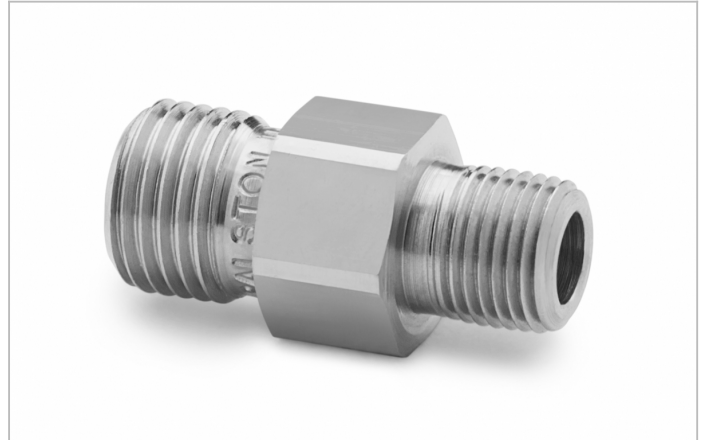


Part No.

QTHA-1MS0

1/8" male NPT x male Quick-test, no check-valve, S.S.

Connects Female NPT to Quick-test hoses with brass or stainless steel hose ends.



QTHA-1MS0

Specs/Attributes

Country of origin	USA
Has Check Valve	No
Materials	Stainless Steel
Max Operating Temperature	225 °F / 105 °C
Max Pressure	5000 PSI / 350 bar / 35 MPa
Max Vacuum	0.00 InHg / 0.0 kPa
Min Operating Temperature	0 °F / -18 °C
Seal Materials	Buna-N
Wrench Size	9/16 In 15 mm
Connector End 1	1/8" Male NPT (ASME B1.20.1)
Connector End 2	Male Quick-test
Dimensions	H: 1.2 in (3.05 cm) x W: 0.56 in (1.42 cm)